

Overview

The latest version of the PLATO Learning Environment (PLE) includes improvements in the following key areas:

- Editing status for learners and assignments.
- Deactivating and deleting user commands,
- Selecting learners for the Learner Daily Usage Report.

Edit Status for All Learners and Delete All Learners

Assignments across multiple classes

When viewing an assignment in My Classroom, you can use the Edit Status for All Learners or Delete All Learners functionality if you have access to all the learners who have that assignment. However, when an assignment has been made across multiple classes, it is possible that the classes will have different teachers.

In this case each teacher is restricted from choosing either Edit Status for All Learners or Delete All Learners so as not to interfere with another teacher's classes.

This restriction is indicated by having the buttons for these features deactivated and then providing details about why the restriction is in place.

The screenshot shows a user interface with two buttons at the top: 'DELETE FOR ALL LEARNERS' and 'EDIT STATUS FOR ALL LEARNERS'. Below these is a table with two rows of learner information. The first row shows 'Dresden, Hari' with an 'Add / Remove' button. The second row shows 'Lynnfield, Bishop' with a similar button. A yellow tooltip box is overlaid on the 'EDIT STATUS FOR ALL LEARNERS' button, containing the following text:

This option is only available if all learners who have this assignment are displayed. Please adjust filter criteria above.

If you are unable to display all learners, it is likely that this assignment has also been given to another class. Contact your Account Administrator to make changes for all learners for this assignment.

As an alternative to trying to edit status for all learners at the same time, please consider editing status for individual learners.

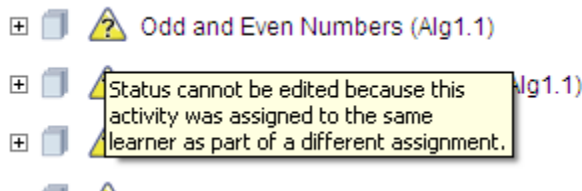
In this situation, we recommend you edit status for each learner, one at a time. To delete all of your learners from the assignment, select each learner and remove them from the assignment as individuals. Alternatively, the administrator who created the assignment originally *can* make changes to all learners at one time.

Editing Assignment Status –Restrictions

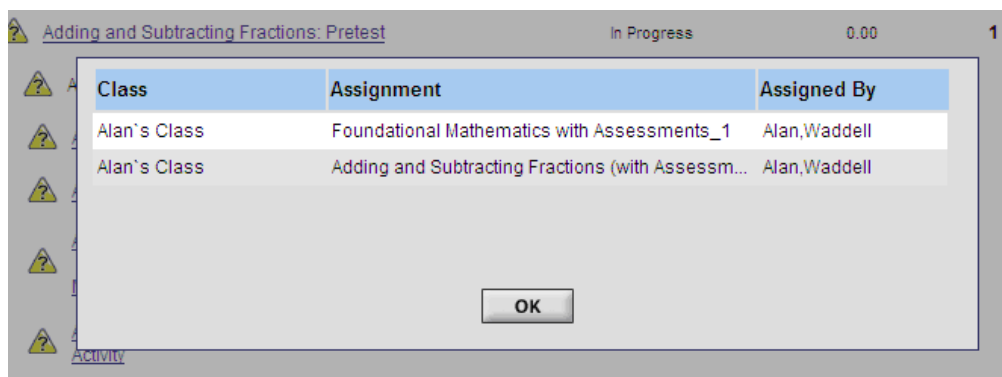
Why can't I update this particular status?

The types of status that can be altered are completion, mastery, or score. There are situations in which you will not be able to alter a status:

- A particular status may not be applicable to an element of the assignment. In this release (PLE 1.3.13) we simply do not list any status information or controls for that status on that element. For example, you can never alter a score or mastery status for a tutorial because completion is the only possible status for that element. So, no control is shown under score for tutorials.
- There is a conflict with status on this element of the assignment because that same content is present in a *different* assignment for this same learner or learners. In this release (PLE 1.3.13) we display the current status for that element of the assignment, but only as information and not as a user modifiable item in the webpage. There will be a small triangle to indicate a status conflict. If you hover your mouse over the icon, a message appears to explain the type of restriction.



If you click on the triangle/question mark you will see details about the assignment conflict.

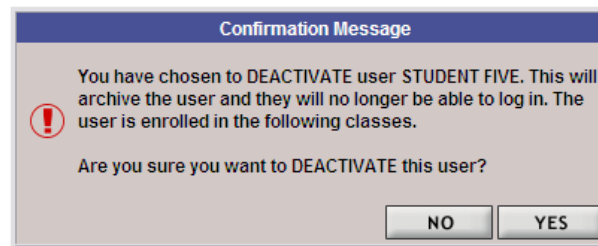


Deleting and Deactivating Users

The processes of Deleting and Deactivating users have been made more consistent in the system. In addition, we have added messages that confirm and clarify the actions being taken.

Deactivate

- To deactivate a user simply means to take that user and remove them from active involvement in the system.
- They will not be able to log in to PLE.
- However, the progress that deactivated learners made on assignments and their status in various classes will be maintained even once they have been deactivated.



The user is associated with the following classes.

Class Name	Role
testclass	Teacher
82791	Teacher
Alan's Class	Learner
Kyle Class	Learner

Delete

- To delete a user is to permanently remove them from the system.
- This is to be used rarely and should only be considered as a way to correct an error, an 'Oops!' type of action.
- The system will only allow you to delete a user if that user has no progress data on any assignments. If a user does have progress data, the correct step is to deactivate them.

Delete Multiple Users

You are about to DELETE 2 users from the PLE system.

If these users are the last users in a class that has no assignments, this class will also be deleted.

This action cannot be undone. Are you sure you would like to proceed?

NOTE: If any of the selected users has results data for one or more active assignments, they will not be deleted from the system. Instead they will be deactivated, and can be found by searching for users with a status of "inactive".

Learner Daily Usage Report

When selecting a user to run the Learner Daily Usage report, the user is found by selecting them from a list of learners in a class. By its nature, however, the Learner Daily Usage Report is not limited to activity within a single class.

Selecting the User

- The report setup asks you to identify a learner or set of learners for which you want to run this report. In order to list that set of learners, you select them from a class list.

The screenshot shows a web form for selecting a learner for a report. It includes dropdown menus for District (Alan's District), School (Alan's School), Grade (--- to ---), and Class (Alan's Class). A 'Learners' dropdown is open, showing options: 'All learners in class' (selected), 'Five, Student', 'Four, Student', and 'L01, L01'. Below the dropdowns are fields for 'Date Range' (with calendar icons) and 'Select Format' (set to 'On Screen'). A 'Go' button is at the bottom right. A note at the bottom states: 'NOTE: When you select a class above, it is only used to help choose a particular learner for the report - it does not limit the final report. The report is designed to show usage for all the learner's classes.'

Reading the Report

- Note that the activities listed in the final report are for **all** classes the learner is a part of, irrespective of the class that was used earlier as a method of identifying the learner for the report.