

English Discoveries

Version 2.1

Installation Instructions



© . 2002 Edusoft Ltd

Table of Contents

LIST OF TABLES	5
WHATS IN THE KIT.....	6
INSTALLING <i>English Discoveries</i> - MULTI-USER VERSION	7
WHAT YOU WILL NEED.....	7
DISK SPACE ALLOCATION	7
IMPORTANT INSTALLATION REQUIREMENTS	8
SPEECH RECOGNITION EVALUATOR.....	10
CONFIGURATIONS	12
CONFIGURATION A: SHARED WINDOWS.....	12
CONFIGURATION B: LOCAL WINDOWS.....	12
INSTALLATION PROCEDURE	13
MODULE INSTALLATION	14
USER INSTALLATION.....	22
DEFINING NETWORK RIGHTS.....	26
UNINSTALLING <i>English Discoveries</i> - MULTI-USER VERSION MANUALLY.....	27

UPGRADING	28
CREATING A NEW DATABASE	28
INSTALLING <i>English Discoveries</i> - STAND ALONE	30
UNINSTALLING <i>ENGLISH DISCOVERIES</i> (STAND-ALONE WORKSTATION)	32
RUNNING THE PROGRAM.....	33
TROUBLE SHOOTING.....	34
BACKUP	35
SECURITY	35
APPENDIX A: HARDWARE REQUIREMENTS-STAND ALONE INSTALLATION	36
APPENDIX B: HARDWARE REQUIREMENTS-MULTIUSER INSTALLATION	36

LIST OF TABLES

Table 1	Required Disk Space	7
Table 2	User Network Rights	26
Table 3	Teacher Network Rights	26
Table 4	Troubleshooting	34
Table 5	Server and Stations Hardware Requirements	36
Table 6	Network Connections	37

WHATS IN THE KIT

If you have purchased **the entire English Discoveries package**, your folder should include:

- ◆ A user's guide for each module: Let's Start (green), Basic, Intermediate, and Advanced (blue) and Executive (orange) modules.
- ◆ 13 CDs including:
Installation (1); Let's Start (1); Basic(1-3); Intermediate (1-3); Advanced (1-3);
Review (1), and Executive (1).
- ◆ Installation Guide; Teacher's Management System, and Pedagogical Guide.

INSTALLING *English Discoveries* - MULTI-USER VERSION

WHAT YOU WILL NEED

To perform the installation for the “multi-user” version of *English Discoveries* you will need the Setup CD labeled SETUP, including the *Teacher’s Management System Version 2.1*.

English Discoveries is a 16 bit program that runs on multimedia PCs running Windows 9x,2000,ME, XP and Windows NT workstations as student workstations. English Discoveries will run on servers running Windows 9x, Windows NT, and NetWare. If you are using Windows 9x, **it is not recommended** that you have one station acting as both a server and workstation.

DISK SPACE ALLOCATION

There are two ways of running the English Discoveries program:

- 1 Working with Module CDs of *English Discoveries* running from each local station.
- 2 The contents of the module CD of *English Discoveries* are copied onto the server during the installation procedure described below. For this option, you must have 6 Gigabytes of free on the server to install all the modules, as well as additional space to add the future database.

If you intend to install the module CD-ROM discs to the server, you will need each disc you plan to install in addition to the Setup disc. In addition you will need the following free disk space on a hard disk on the server:

Table 1 Required Disk Space (check figure)

Module	Space Required	no of CD-ROMs
Lets Start	Mb 433	1
Basic	Gb 1.12	3
Intermediate	Gb 1.14	3
Advanced	Gb 1.39	4
The executive	Mb 655	1
Full Pack	Gb 4.005	12

Important Please See Appendix B: Hardware requirements-multiuser, page 36 for Network Hardware Requirements.

IMPORTANT INSTALLATION REQUIREMENTS

Please note the following prior to installing English Discoveries on your server:

- Please run the installation from a computer that is designated as the teacher's computer. If not, please run the installation from a computer that will be used by teachers as well as students. The program will automatically install the Teacher's Management System at this station.
- English Discoveries will not run with the **Landesk** virus protect program (version 5.02).
- Set the workstation video resolution to 640x 480 or 800x600 and the colors to 16 bit if available (a minimum of 256 colors).
- If your server is running NetWare, you should log on as a Supervisor with all rights to perform this installation.
- Perform module installation from a workstation and NOT directly on the server (Windows NT)
- Verify that each user has a unique account in the Network and has a personal login script to the Network (relevant for Configuration A: Shared Windows, see page 12).
- If the English Discoveries modules are installed on the server:
 - Map the necessary space on the server's harddisk to a permanent connection at a local workstation.
 - The mapping of the Network directory must be the same for all stations.

For example:

Server D:\Engdisc	Correct
Workstation F:\Engdisc	Not Correct
Workstation D:\Engisc	Correct

- DO NOT install the English Discoveries modules in separate directories.

- If you install some of the modules using a specific configuration (i.e. to the server or by using the module CDs in the CD-ROM drive), you must later use the same configuration for installing the other modules. You cannot run one module from the CD and another module from the server.
- Before installation, it is **very important** that you correctly uninstall previous versions of the program (see Uninstalling English Discoveries - Multi-user Version, see page 27)(in Stand -Alone installations use the uninstall facility).
- Do not install from a remote CD-ROM drive.
- If you install to the same drive and folder during the new installation, the user is prompt to the presence of a previous version on the server. All old modules will be erased, except for the database **Engdb** folder, which will not be replaced with a new database, unless you specifically request. See Creating A New Database, page 29

SPEECH RECOGNITION EVALUATOR

For Network installation refer to the Network installation instructions published separately

English Discoveries includes a program to optimize the speech recognition function (voice recording). Use the Speech Recognition Evaluator to find the best position for the microphone. The test checks speech accuracy and audio signal strength.

To Open the Speech Recognition Evaluator:

Click on the Start icon, point to Programs and then to English Discoveries. Click on the Speech Recognition Evaluator icon; the evaluator screen opens.



To Perform the Speech Recognition Test:

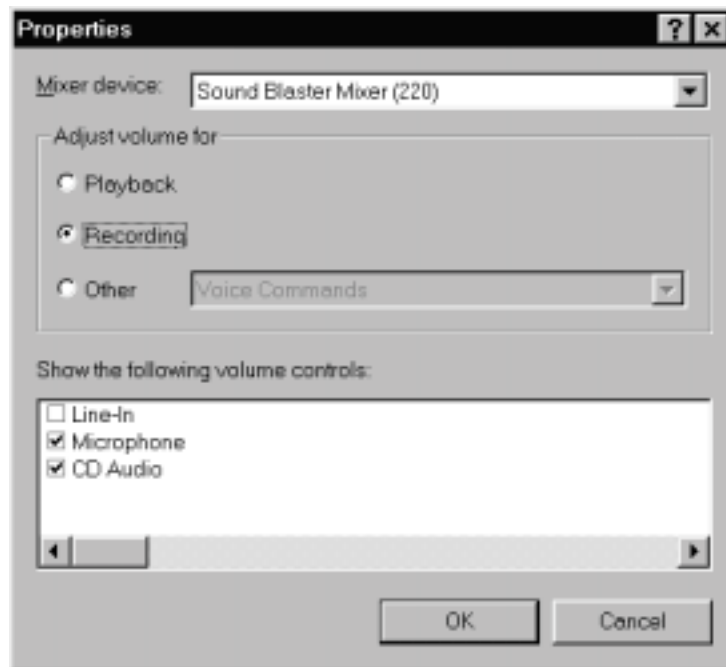
1. Select a word from the Evaluation Word drop-down box.
2. Click the Start Speech button.
3. Say the Evaluation word into the microphone and see the result on the Accuracy Meter and the Percentage Accuracy Indicator. Repeat several times with the microphone in different positions. The result is shown for the last word spoken. Find the optimum position for the microphone.
4. Click on the Stop button.

If the Signal Strength Meter is not showing a signal, it means that your microphone is faulty or is not connected.

Tip: For the microphone to operate it must be selected in the Windows 9x Volume Control window.

To activate the Microphone connection:

1. Click on the Start icon .
2. Point to Programs.
3. Point to Accessories.
4. Point to Multimedia.
5. Click on Volume Control; the Volume Control window opens.
6. Select Properties from the Options Menu.
7. Select the Recording box.
8. Check the Microphone check box.



CONFIGURATIONS

Follow the instructions given below according to the configuration of your Network.

CONFIGURATION A: SHARED WINDOWS

- ◆ The Windows operating system is found on the server in a common directory for all users. (For example: *f:\apps\windows*.)
- ◆ Users have their own Windows sub-directories on the server.
For example:
for user1: f:\users\user1\windows
for user2: f:\users\user2\windows, etc.

To install, **you must log in as a Supervisor or as a Supervisor Equivalent**, since the Installation program makes changes in the Windows directory.

CONFIGURATION B: LOCAL WINDOWS

The Windows operating system is found in separate computers for each user.

To install, **you must log in as a Supervisor or as a Supervisor Equivalent** from one of the stations.

INSTALLATION PROCEDURE

Installation is carried out in two stages:

- 1. Installation**
- 2. User Installation**

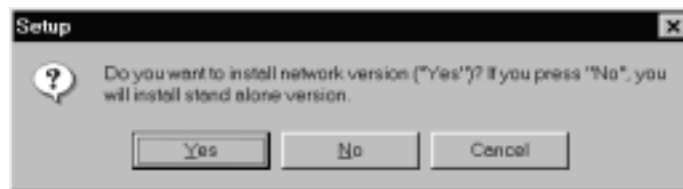
.

.

MODULE INSTALLATION

To install English Discoveries Multi-user:

1. Run SETUP.EXE from the Setup CD or use the Autorun, and follow the instructions on the screen as follows:
2. You are asked to install English Discoveries to either the Network or to a Stand-alone station. Click Yes to install to the Network.



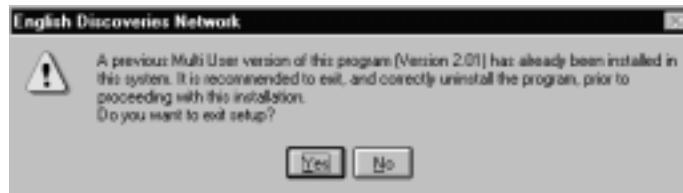
3. The *Select Language* window opens;



- Select the native language for the English Discoveries program modules.
 - Uncheck the box at the bottom of the screen, if you want to run the setup interface in English.
4. A Welcome screen appears; click next.
 5. The **Minimum System Requirements** window displays the hardware equipment required for your system to run English Discoveries. If the statement “Your computer system matches the program requirements” is displayed, then your system meets the minimum requirements for running English Discoveries.



If you have a previous version of English Discoveries installed on the server, the following message appears:



You must now correctly uninstall the previous version of English Discoveries and then reinstall the program. See Uninstalling *ENGLISH DISCOVERIES - Multi-user Version* Manually, page 27.

- The **Network Installation Type** screen opens. The default option “Module Installation” installs selected modules (select modules later in this installation) to the server.

The **TMS** (Teacher’s Management System) will be automatically installed to the server.

You must perform the module installation, prior to a user installation. After an initial installation from a single workstation, all other workstations will be user workstations.

- The **Installation** screen appears. The default option is “Full Installation”.

English Discoveries 2.1 includes connectivity to a web-site with supplementary activities. At the end of the installation of English Discoveries, you will be asked if you have a web browser and if you wish to add this connectivity. If you have already installed English Discoveries, and are only installing the web connection, select **Internet Access Only**.

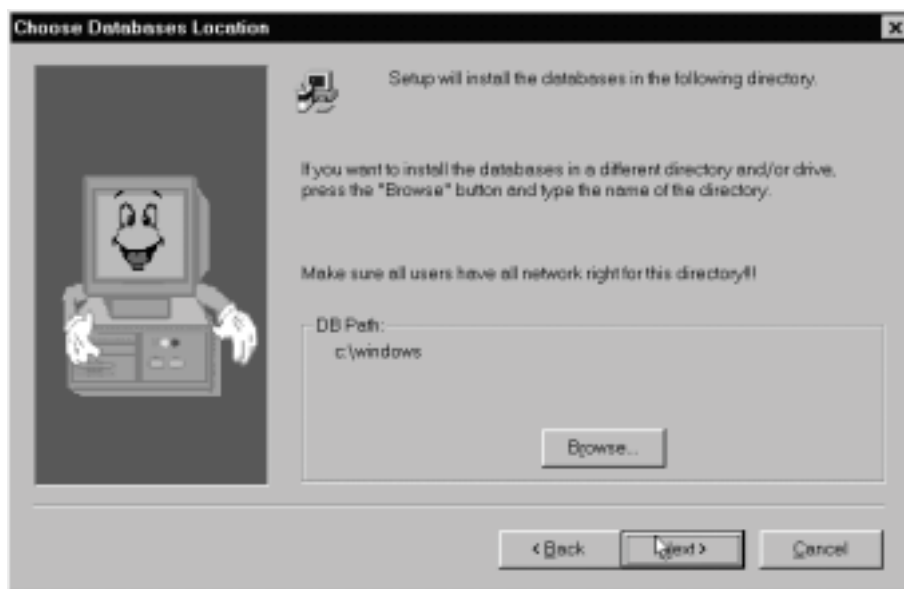


8. The *Choose Destination Location* window shows the drive and directory where the program will be installed. To select a different directory and/or drive, click on the Browse button.



IMPORTANT: The path name must be no longer than 15 characters (including /or special characters).
The same path name must not be used more than once.

9. The **Choose Databases Location** window shows the drive and directory where the database will be installed. To select a different directory and or drive, click on the Browse button.



IMPORTANT: The path name must be no longer than 15 characters (including /and other special characters).

The same path name must not be used more than once.

The contents of the database include the class names, students, models, passwords, student work files, management reports etc.

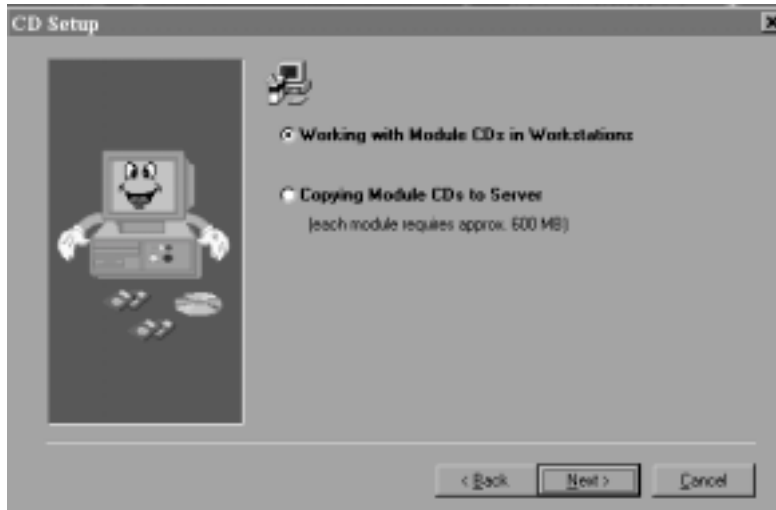
10. If the *Windows Type* screen opens, select the type of Windows you are using:

“Local Windows” (the windows operating system is installed on the local disk) or “Shared Windows” (the windows operating system is installed on the server). **This window opens, only if required.** “Local Windows” is the default.



11. The *CD Setup* window opens. You can run the program by either copying the CD modules to the server, or by running them from the CD-ROM drive in the workstation.

“Working with Module CDs in Workstations” is the default.



Each module requires approximately 600MB. Please refer to Disk space allocation, see page 7 for an accurate estimate of hard-disk space required on your server for installation.

Important: If the default is “Copying Module CDs to server”, you have not correctly uninstalled a previous version of English Discoveries. See, Uninstalling *ENGLISH DISCOVERIES - Multi-user Version Manually*, page 27

If you are working with the module CDs in the workstation, proceed to step 12.

12. If you are copying the module CDs to the server, the *Choose CD location* window opens. To select a different directory and or drive, click on the Browse button.



**IMPORTANT: The path name must be no longer than 15 characters (including /and other special characters)
The same path name must not be used more than once**

13. The *Select Modules* window opens. Select the modules required.

Click on the **Select All** button to install all modules.

Modules that you have not purchased will be disabled from selection.

The selected files are copied to the server.

14. If you have an Internet connection, select **Yes**, and proceed to step 15 below.
15. The *Browser Selection* screen opens; select your Browser and follow the instructions on the screen.

English Discoveries will now complete the installation. This process takes time, depending on the speed of your CD-ROM drive. From time to time, you will be asked to insert the CDs in order. They will then be copied to the server (if you chose this option). Just prior to completion, you will be required to insert the Setup CD in the CD-ROM drive.

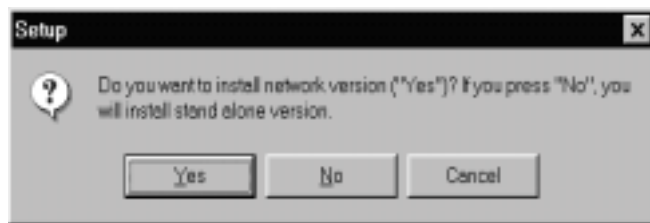
At the conclusion of the installation, you will be asked to locate your web browser. English Discoveries will attempt to do this automatically, however you can do it manually, where required.

You will also need to fill out a registration form to access all of the features for this portion of the program. You only need to fill out this form once.

USER INSTALLATION

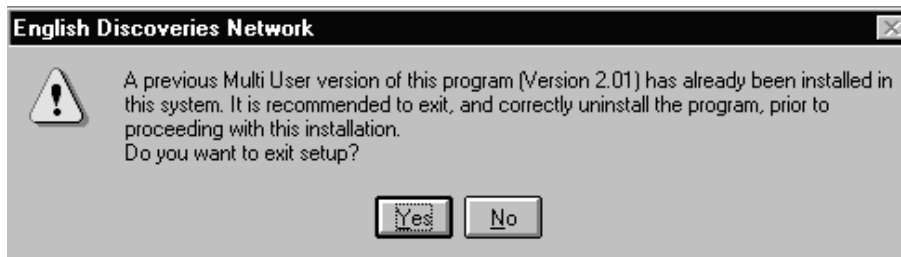
To install English Discoveries Multi-user for additional user(s):

1. Login to server for each user that you want to install the program.
2. Enter Windows at each workstation.
3. Run `SETUP . EXE` from `XX/engcd/setup` where `XX` is the letter representing the map drive
or
Run `SETUP . EXE` from the installation CD (or use the autorun).
4. You are asked to install English Discoveries to either the Network or a Stand-alone station; click Yes to install to the Network.



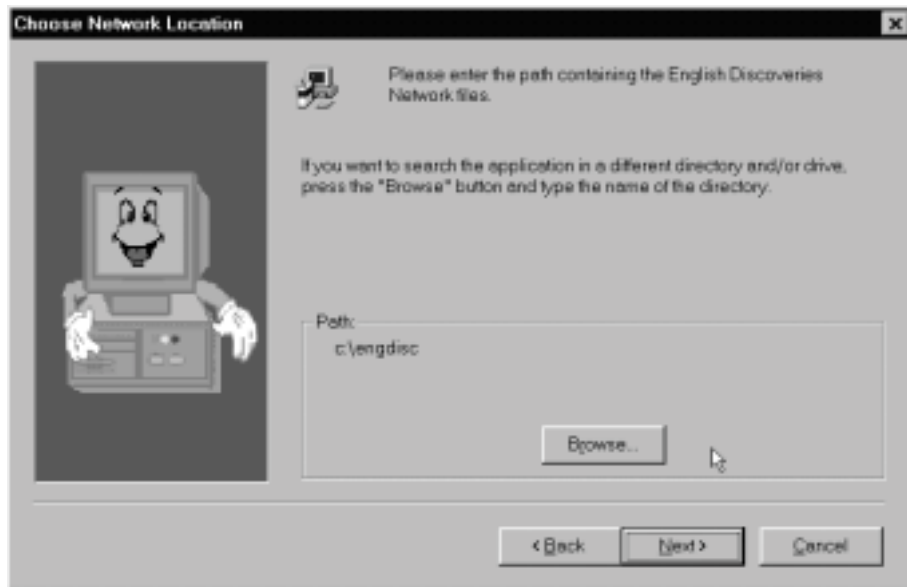
5. The *Select Language* window opens;
 - Select the native language for the English Discoveries program modules
 - Uncheck the box at the bottom of the screen, if you want to run the setup interface in English.
6. A Welcome screen appears; click next.
7. The *Minimum System Requirements* Window displays the hardware equipment required for your system to run English Discoveries. If the statement “Your computer system matches the program requirements” is displayed, then your system meets the minimum requirements for running English Discoveries.

If you have a previous version of English Discoveries installed on the server, the following message appears:



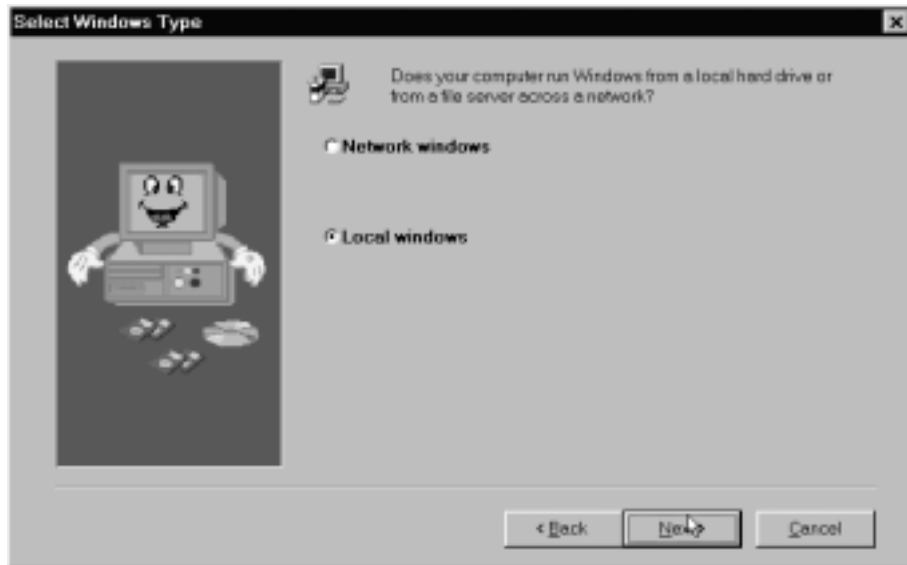
You must now correctly uninstall the previous version of English Discoveries and then reinstall the program. See Uninstalling *ENGLISH DISCOVERIES* - Multi-user Version Manually, page 27.

8. When the *Network Installation Type* window opens, select “User Installation”.
9. When the *Choose Network Location* window opens, type in the path where the English Discoveries application files are saved on the Network.

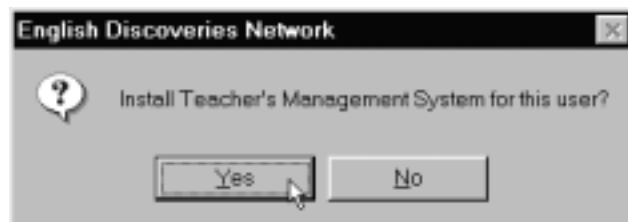


10. If the *Select Windows Type* screen opens, select the type of windows you are using:

“Local Windows” (the windows operating system is installed on the local disk) or “Shared Windows” (the windows operating system is installed on the server). **This window opens, only if required.** “Local Windows” is the default.



11. The *Teachers Management System* dialog box opens.



Select **Yes** to install the Teachers Management System
or
Select **No** to not install the Teachers Management System.

Note: The Teachers Management System was already installed on the first station that you ran the installation program. The TMS can only be installed on one station only. It should be installed on the teachers' station.

12. You are now asked if you have an Internet Connection.

If you have a connection, select **Yes** and follow the instructions on the screen.

DEFINING NETWORK RIGHTS

Important: Defining Network Rights

The installation creates the following directories (default names):

- engdisc
- engDB
- engCD

Grant the teacher and the users the appropriate rights as follows:

Table 2 User Network Rights

		NETWORK RIGHTS		
	Directory	Novell Rights	NT	Win '9x (AccessType)
User's Rights	engdisc	R (ead) F (ile scan)	Read	Full
	engDB	Erase, Create	Full Control	Full
	engCD	R (ead) F (ile scan)	Read	Full

Table 3 Teacher Network Rights

	Directory	Network Rights	NT	Win '9x
Teacher's Rights	engdisc	R, F	Full Control	Full
	engDB	Erase, Create	Full Control	Full
	engCD	R, F	Full Control	Full

If you are using NetWare or NT Server, you may wish to create a generic student logon as opposed to providing each student with a unique logon. Teachers must have supervisory rights to use the English Discoveries TMS.

UNINSTALLING *English Discoveries* - MULTI-USER VERSION MANUALLY

PROGRAM ON THE SERVER

In order to uninstall the program on the server you should follow the next steps:

- ☞ Delete the relevant icons in the Windows group related to *English Discoveries*.
- ☞ Delete the Windows group related to *English Discoveries*.
- ☞ Delete the following directories on your server hard drive:
engcd, engdisc, engdb

Important-If you need the old records, then make a backup copy of the **engdb** folder prior to deleting it, see Database, page 28

- ☞ Delete the following files under directory Windows :
 - berlitz.ini
 - engli.ini
 - edcfg.ini
 - (*installed language*).ini (for example, Spanish: spani.ini)
 - If you have a connection to the English Discoveries Web Link, then delete the file ed20web.ini.

ON THE USER WORKSTATION

In order to uninstall the program on the user workstation, you should follow the next steps:

- ☞ Delete the relevant icons in the Windows group related to *English Discoveries*.
- ☞ Delete the Windows group related to *English Discoveries*.
- ☞ Delete the following files under the directory Windows :

- `berlitz.ini`
- `engli.ini`
- `edcfg.ini`
- `(installed language).ini` (for example, Spanish: `spani.ini`)
- If you have a connection to the English Discoveries Web Link, then delete the file `ed20web.ini`.

UNINSTALLING THE DONGLE DEVICE DRIVER AND LICENSE MANAGER

For Novell NetWare

- Enter **unload haspserv.nlm**

For Windows NT

- Run `Lm Setup.exe`
- In the *Set Up Type* window in the NT License Manager wizard, click on the **Uninstall** button.

For Windows 9x

- Use the uninstall utility. From Start up\Programs\Nethasp License Manager\Uninstall NLM

UPGRADING

If you already have a previous version of English Discoveries installed on your Network, then you must upgrade your installation. **Prior to upgrading your installation to English Discoveries version 2.1, you must correctly uninstall English Discoveries version 2.0 (or previous version).**

You must correctly uninstall and reinstall separately for both the server and user installations. See Uninstalling *ENGLISH DISCOVERIES* - Multi-user Version Manually, page 27.

DATABASE

If you need the old database records, then **save** a backup copy of the **engdb** folder, prior to performing the upgrade. If you do not need the old database records, then you can delete them.

To keep the previous engdb file:

1. Save the **engdb** folder.
2. Complete the upgrade.
3. Replace the new **engdb** folder with the old **engdb** folder that you just saved.

CREATING A NEW DATABASE

If you cannot enter students into a class or cannot successfully perform any other activity in the TMS, then it is likely that your database is corrupted. All student records in the old database will be erased. You will have to reenter student and class data manually, unless you have a backup.

If you have a working backup of the “engdb” folder, load and run it. If it is OK, then disregard the following instructions.

To create a new database without uninstalling and reinstalling the program, follow the following instructions:

To delete the old database directory:

1. Switch to the “engdb” folder installed to the path on the server, that you defined in the setup.
2. Delete all of the contents of “engdb” folder, except for the “Teadb” directory.
3. Erase the contents of the “Teadb” directory (without deleting the folder itself).

To create a new database directory:

1. Insert the “Setup” CD into the CD-ROM drive.
2. Find the “Teadb” directory, under “Combasic” (on the Setup CD).
3. Copy the contents of the “Teadb” directory on the CD to the empty “Engdb\teadb” directory on the server.
4. Run TMS and reenter all class and student information.

INSTALLING *ENGLISH DISCOVERIES* - STAND ALONE

PROGRAM INSTALLATION

INSTALLING *ENGLISH DISCOVERIES* IN WINDOWS 9X,2000,ME,XP OR NT (STAND-ALONE WORKSTATION)

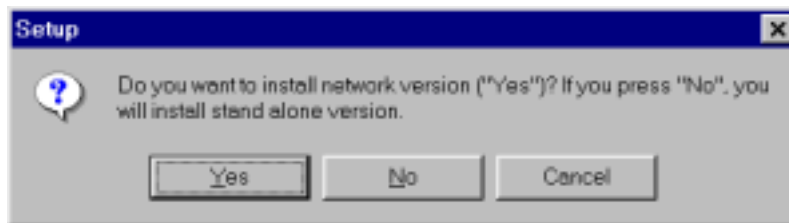
English Discoveries features the Autorun function.

To install English Discoveries on a computer with the Autorun function:

1. Insert the CD into the CD-ROM drive; a dialog box appears on the screen.
2. Click on **Yes** and follow the screen prompts.

To install English Discoveries on a computer without the Autorun function:

1. Insert the CD into the CD-ROM drive.
2. Click on **Start**.
3. Point to **settings**.
4. Click on **Control Panel**.
5. Double click on the Add/Remove programs icon.
6. Click on Install.
7. Click on Next and continue as follows:
 1. Select **No** to install the Stand-alone version of English Discoveries.



2. A *Welcome Screen* appears; click Next.
3. The *Minimum Hardware Requirements* screen appears; click Next.
4. The *Installation* screen appears.

If you have already installed English Discoveries, and are only installing the web connection, select **Internet Access Only**.

5. The *Choose Destination Location* screen appears; click the Browse button, to choose a different destination location.
6. The *Select Modules* screen appears; select the modules required or click **Select All** to select all of the modules.

The selected modules are copied to your hard disk.

7. You are now asked if you are connected to the Internet. If you select **Yes**, follow the instructions on the screen.

UNINSTALLING *ENGLISH DISCOVERIES* (STAND-ALONE WORKSTATION)

PROGRAM UNINSTALLATION

To uninstall English Discoveries:

1. Click on Start.
2. Point at Programs and then at the ENGLISH DISCOVERIES folder.
3. Click on the program (English Discoveries) icon; select the **Uninstall** icon.

RUNNING THE PROGRAM

You can choose to run the program from either the server or the CD installed on the workstation.

To start English Discoveries working with Module CDs in workstation:

1. Insert the CD into the CD-ROM drive.
2. Click on Start (or use the autorun feature)
3. Point at Programs and then at the ENGLISH DISCOVERIES folder.
4. Click on a program module (English Discoveries) icon; the program starts.

To run English Discoveries, with module CDs installed on the server:

1. Click on Start.
2. Point at Programs and then at the ENGLISH DISCOVERIES folder.
3. Click on a program module (English Discoveries) icon; the program starts.

TROUBLE SHOOTING

The following table identifies common problems that you may encounter during and after the installation of the English Discoveries Program.

Table 4 Troubleshooting

Problem	Solution
The modules or the TMS crash after logon. The most likely reason is that the user is logged into the Network with inadequate rights.	Review the rights with the tables in these instructions and ensure that adequate rights have been granted.
If the TMS crashes when the program is launched, you may see the message “The Teacher’s Management System is already running”, when it actually is not.	Go to the engdb /directory on the server and delete teacher.tmp.
You have to reinstall English Discoveries to correct a problem.	Follow the proper procedure for uninstallation, see Uninstalling <i>ENGLISH DISCOVERIES</i> - Multi-user Version, page 27.
Recording difficulties experienced in English Discoveries with Sound Blaster 16 or Vibra 16 cards running under Windows 9x.	Go to Accessories\Mixer, choose the recording mode and set the microphone to the maximum and record yourself . If the sound level is still poor then this a sign that there is a problem with the sound blaster and Windows 9x, and not with the English Discoveries program.

<p>If your workstation is running NetWare on the server-you may encounter a message indicating that the program is unable to determine if you have more than 2.0 gigabytes of space on the server. (this message is usually erroneous and results from a 16 bit environment not seeing space beyond 2.0 gigabytes due to DOS limitations)</p>	<p>If you have adequate disk space click continue. If the program insists that you have insufficient disk space, then restart the installation, selecting no more than three modules at a time. You will then have to repeat the installation several times to complete it.</p>
<p>If the user is prompt with a message “this user is already running”. Ignore the message and enter the application. You have not logged out correctly from the application.</p>	<p>Logout and login correctly from the application.</p>

BACKUP

You **must backup** the **engdb** directory on a daily basis to another server or Backup folder. This directory contains student records, etc. that may be useful when the program has to be reconstructed.

DO NOT BACKUP engcd, as this directory contains the contents of the CD-ROMs, is very large and easy to restore.

SECURITY

The **engcd** and **engdisc** directories have been set up as **read only** directories. **Engdb** is never a read only directory. The **engdb** directory is vulnerable at the student station, unless you take protective measures. For example, through policies and third party software, which can protect these files, as well as your station in general.

APPENDIX A: HARDWARE REQUIREMENTS-STAND ALONE INSTALLATION

- Windows 9x,2000,ME, XP and NT
- PC (IBM Compatible)Pentium
- 16 MB RAM (24 MB RAM Recommended).
- Hard disk – at least 10 MB free for each module.
- CD ROM Speed 4X.
- Super VGA monitor, with Super VGA display card (256 color support).
- Sound card (Windows compatible).
- Microphone and speakers or earphones.
- An Internet Connection and a Browser are required to link-up to the English Web Connection.

APPENDIX B: HARDWARE REQUIREMENTS-MULTIUSER INSTALLATION

Table 5 Server and Stations Hardware Requirements

	Server	Stations
Computer	Pentium 300 MHz	Pentium 133 MHz
RAM	64 MB RAM (128 recommended)	32 MB RAM
Hard disk	6.4 Giga	
Multimedia	CD Rom drive	CD-ROM drive, sound card, microphone, and earphones, if working as a workstation under Windows 9x.
Network interface card	10/100 Mbits/s	10/100 Mbits/s

- ◆ An Internet connection, a modem and a browser are required to link up to the English Web Connection.
- ◆ UPS recommended.

Table 6 Network Connections

Cables	10 Base-T UTP, CAT 5 per station
Hub	100 MB or Switch 10 Mbit/s (recommended)