

PLATO[®] Skills Inventory

Grade Level: K–3
Target Audience: Elementary
Audio Support: Yes

Product Features

- Diagnostic-prescriptive tool for K-3 math and reading
- Randomly generated questions are thematically aligned with the modules in the K-3 Beginning Reading and Math Expeditions
- Tracks the learner's progress with easy-to-read bookmark symbols
- Allows learner to stop the test and resume later
- Tutorial is available at the beginning of each inventory to guide the learner through the menus
- Full audio support

Product Benefits

- Identifies learning gaps in math and reading on the K-3 level
- Exempts learner from skills mastered
- Reinforces test preparation skills
- Identifies skills for IEP planning
- Prepares learner for state level and local assessments
- Strengthens following directions skills
- Allows teacher to place the learner at the appropriate skill level to decrease test time
- Teacher reports track learner progress and time on task

Online Tools

Tools are not available or necessary to complete the Skills Inventory

Menu Icons

Talk Button—replays the question

Answer Button—allows learner to see the correct answer without receiving credit

Check Button—checks learner's answer before proceeding to the next question

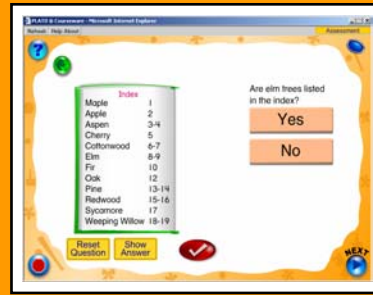
Stop Button—stops and bookmarks where the learner left off or provides an option for the learner to complete the test

Reference Materials (Refer to PLATO Documentation CD)

PLATO Curriculum Guide— Skills Inventory

PLATO Curriculum Guide— Beginning Reading—Student Activity Worksheets

PLATO Curriculum Guide—Math Expeditions—Student Activity Worksheets



Getting Started

- Refer to the PLATO Curriculum Guide to learn about the product features and benefits.
- Preview the Skills Inventory to explore the menu icons and navigation steps.
- Decide which assessment level to start based on the learner's instructional level.
- Set a time limit of 30 minutes to maximize the learner's performance and time on task.

Lesson Progression

- Learner begins by completing the tutorial section to understand the basic menu icons.
- Learner proceeds by answering questions that follow a specific set of learning outcomes.
- Upon completion, the learner receives an individual learning path based on performance.
- Learner then completes the prescribed courseware modules to increase learning achievement.

Assessment

- Asses the learner in each skill area at the beginning of the year to determine placement and identify specific math and reading skills which need to be taught during the year.
- The Skills Inventory may be taken at different times throughout the school year, testing only the skills that have been identified and aligned to classroom instruction.
- Use the state or local assessment as an alternative to the PLATO Skills Inventory.

Implementation Strategies

- Discuss the learner's placement level and steps to complete prescribed modules within the K-3 Math Expeditions and Beginning Reading programs.
- Allow plenty of time for students to login and logout when taking the Skills Inventory.
- It is recommended to schedule blocks of 30 minutes to complete the Skills Inventory.
- Design and customize an individual learning path that targets specific learning needs.
- Follow-up with individualized or small group instruction, utilizing the supplemental student activity worksheets located on the PLATO Documentation CD.

Evaluation

- Generate reports to track the learner's progress and identify skill needs.
- Assess and evaluate the learner's progress once a prescribed module has been completed.
- Re-test the learner on the same inventory to measure progress and academic gains.
- Discuss report data with the learner to determine next steps.

Extension Exercises

- Assign the student activity worksheets to reinforce content areas that were tested.
- Distribute the worksheets to small groups of learners to allow them to "work out" the questions and report their findings to the whole group.
- Allow the learner to create test questions to reinforce concepts taught.

For more information, please call 800.44.PLATO or visit www.plato.com

Real learning. Real results.™

Curriculum Structure

Curriculum

Beginning Reading with Skills Inventory

Course

Beginning Reading D – Help Out!

Module

Beginning Reading D – Skills Inventory